

## 午市鐵板料理 LUNCH TEPPANYAKI COURSE



### Chicken Teppanyaki Course 走地雞鐵板套餐

\$16.95

Filet of chicken + miso soup + fried assorted vegetables + rice  
雞扒 + 味噌湯 + 日式炒什菜 + 白飯



### Rib Eye Steak Teppanyaki Course 肉眼扒鐵板套餐

\$24.50

Rib eye steak + miso soup + fried assorted vegetables + rice  
肉眼扒 + 味噌湯 + 日式炒什菜 + 白飯



### Mixed Seafood Teppanyaki Course 海鮮鐵板套餐

\$17.50

3 kinds of seafood + miso soup + fried assorted vegetables + rice  
3 款海鮮 + 味噌湯 + 日式炒什菜 + 白飯



### Vegetarian Teppanyaki Course 素菜鐵板套餐

\$17.50

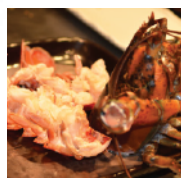
Assorted vegetables + tofu & mushroom + miso soup + rice  
日式炒什菜 + 豆腐及磨菇 + 味噌湯 + 白飯



SUBSTITUTE STEAMED RICE WITH JAPANESE FRIED RICE  
ADD \$3.00 PER PERSON 白飯改日式炒飯每位加 \$3.00



## 鐵板燒特別介紹 TEPPANYAKI SPECIAL A LA CARTE



Live Lobster  
游水龍蝦  
Market price



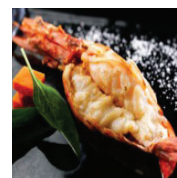
Live Abalone  
游水鮑魚  
Market price



Dungeness  
Crab  
游水蟹  
Market price



Jumbo Scallop  
珍寶帶子



Jumbo Prawn  
越南大蝦皇



Kobe Beef  
神戶和牛



Goose Liver  
新鮮鵝肝



New Zealand  
Rack of Lamb  
新西蘭羊架



Thinly Sliced  
Ribeye  
薄燒牛肉卷



Beef Tenderloin  
特級牛柳

**DONBURI 飯**

- |   |         |
|---|---------|
| 1. Chicken Teriyaki with Rice 日式照燒雞飯            | \$12.00 |
| 2. Beef Teriyaki with Rice 日式照燒牛肉飯              | \$13.00 |
| 3. Salmon Teriyaki with Rice 日式照燒三文魚飯           | \$13.00 |
| 4. Japanese Teppan Fried Rice 日式鐵板炒飯            |         |
| choice of vegetarian, chicken or beef 可選什菜、雞或牛肉 | \$10.50 |
| mixed seafood 海鮮                                | \$11.50 |
| 5. Goose Liver with Seafood Fried Rice 鵝肝海鮮炒飯   | \$17.50 |

午市超值薄燒任食套餐

LUNCH USUYAKI ALL YOU CAN EAT

Monday to Friday Lunch Only 只限星期一至五午市

Saturday, Sunday & Holiday Lunch 星期六、日及假日 \$40.95

(served between 11:30 am to 1:30 pm)

ITEMS ONLY SERVE ONE TIME PER PERSON

以下三項每人限食一次

- Edamame 日式毛豆
- Prawn, Salmon, Squid (one of each) 蝦、三文魚及魷魚各一件
- Gelato 意大利雪糕

ITEMS FOR ALL YOU CAN EAT

以下項目任食

- Miso Soup 味噌湯
- Filet of Chicken 雞扒
- Thinly Sliced Ribeye (Usuyaki) 薄燒蒜蔥肉眼卷
- Fried Assorted Vegetables 炒什菜
- Steamed Rice 白飯

Substitute with Japanese fried rice add \$3.00 per person

白飯改日式炒飯每位加\$3.00

"All you can eat" menu limited to one hour per customer.  
Whole party has to order the same "All you can eat" menu.  
全檯客人需點同一任食套餐, 每位只限任食一小時

Dine In Only. 只限堂食, 不設外帶

\$37<sup>95</sup>